

Medical Collections in Museums

Katie Dabin

Curator of Medicine, Science Museum





Medicine: The Wellcome Galleries, Science Museum

- Overview of medical museum collections
- Origins of the Science Museum collections
- Contemporary collecting









Medicine: The Wellcome Galleries, 2019
Science Museum



Map of London's Sites of Medical Interest, 1913



LONDON MUSEUMS of Health & Medicine

[Find a Museum](#) [About](#) [Events & Exhibitions](#) [Medical History Tours](#) [News](#) [FAQ & Contact](#)

The go-to-guide for collections, libraries and expertise relating to the history of medicine.

Visit one of London's museums of health and medicine to discover extraordinary stories.

From herbs, heart surgery and helicopter emergency services, to pharmacies, false teeth and forensic pathology, our museums provide remarkable insights into humanity's age-long campaign for good health.

Show Map View



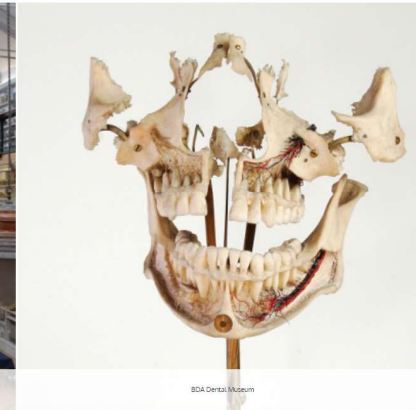
Alexander Fleming Laboratory Museum



Anaesthesia Heritage Centre



Barro Pathology Museum



BDA Dental Museum

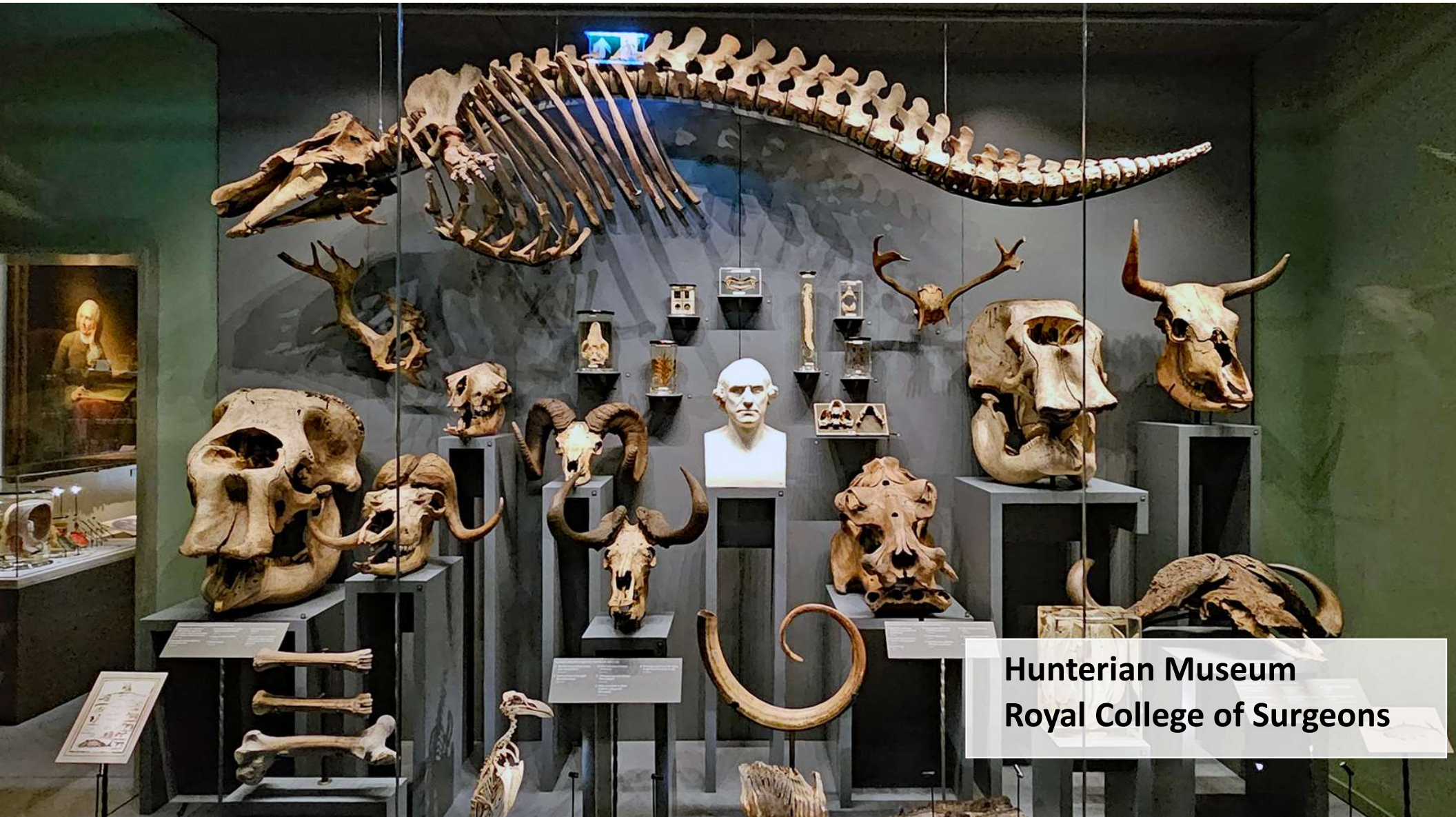


<http://medicalmuseums.org/>

Museum Wormianum depicting
Ole Worm's (1588 – 1654) 'cabinet of
curiosities'







**Hunterian Museum
Royal College of Surgeons**

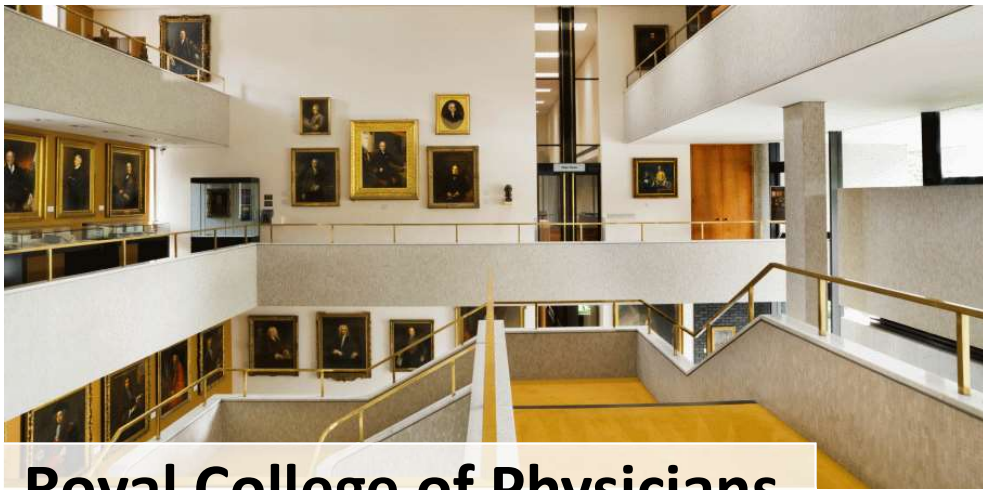


Bethlem Museum of the Mind





Royal College of Nursing



Royal College of Physicians



Association of Anaesthetists



Freud Museum

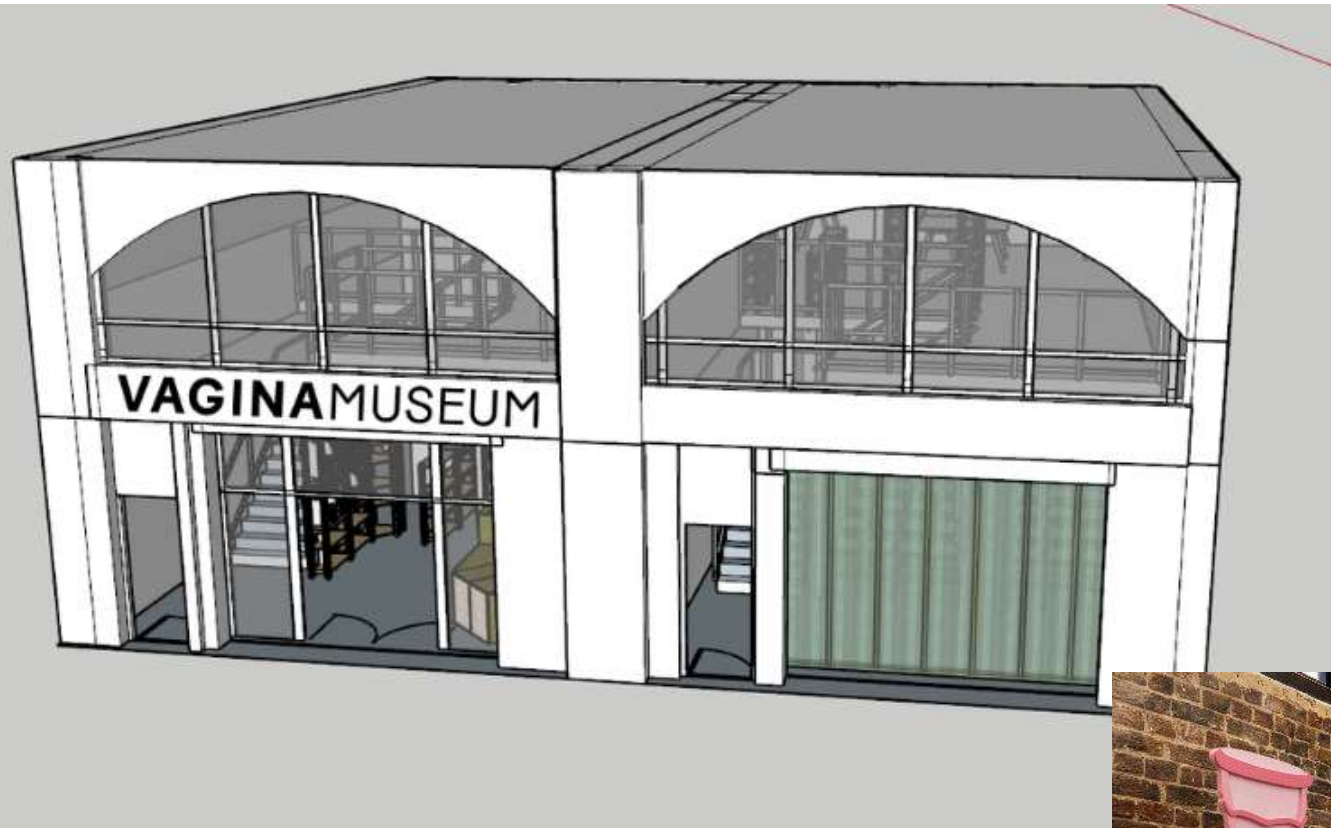


Florence Nightingale Museum



Alexander Fleming Laboratory Museum







Medicine collections at the Science Museum



Sir Henry Wellcome (1853 – 1936)



Tabloid first aid kit, given to Alcock and Brown, for their first transatlantic non-stop flight



A SECTION OF ONE OF THE WELLCOME CHEMICAL RESEARCH LABORATORIES
185, EUSTON ROAD, LONDON (ENGL.), N.W.1

Wellcome chemical research laboratory









Problematic legacies



SCIENCE
MUSEUM
GROUP

COLLECTION

LEARNING

THE GROUP

VISIT OUR MUSEUMS

SCIENCE MUSEUM GROUP

ABOUT US

OUR WORK

OUR SERVICES

WORK FOR US

Q

BY SCIENCE MUSEUM GROUP ON 27 MAY 2021

RESEARCHING CULTURALLY SENSITIVE ITEMS
IN THE SCIENCE MUSEUM'S MEDICAL
COLLECTIONS

As part of our Open for All blog series, Science Museum Research Fellow Shelley Saggarr discusses how the Science Museum Group is researching culturally sensitive items in the collection to help better understand their significance and ensure all objects are cared for respectfully.

In November 2019, the Science Museum opened Medicine: The Wellcome Galleries. Intended to showcase the breadth and depth of the Science Museum Group Collection alongside items from Sir Henry Wellcome’s historical medical collection, the galleries feature hospital technology, contemporary art and ethnographic and religious items.

This broad approach to curating the history of medicine recalls the expansive attitude of Henry Wellcome – a collector who sought to bring together the art, science and spirituality of humankind’s approach to medicine and healing in his personal collection.

Go behind the scenes of the Science Museum Group.

CATEGORIES

- Open for All
- Our audiences
- Our collection
- Our museum group
- Science in the news
- Sustainability

TAGS

- ACCESSIBILITY
- ART
- BEHIND THE SCENES
- CHEMISTRY
- CLIMATE
- CLIMATE CHANGE
- CLIMATE SCIENCE
- COLLECTION PROJECT
- COLLECTION REVIEW
- CONSERVATION
- COP 26
- COP27
- CORONAVIRUS



Lived experience and multiple viewpoints



“The trouble was they were like an old comfy pair of shoes. By the time you’d got used to them and they were all comfortable you were too big for them and you’d got to have another pair.”
Tracey Baynam.

Group shot of pairs of prosthetic limbs made for Tracey Baynam, living with impairments caused by the compound thalidomide.

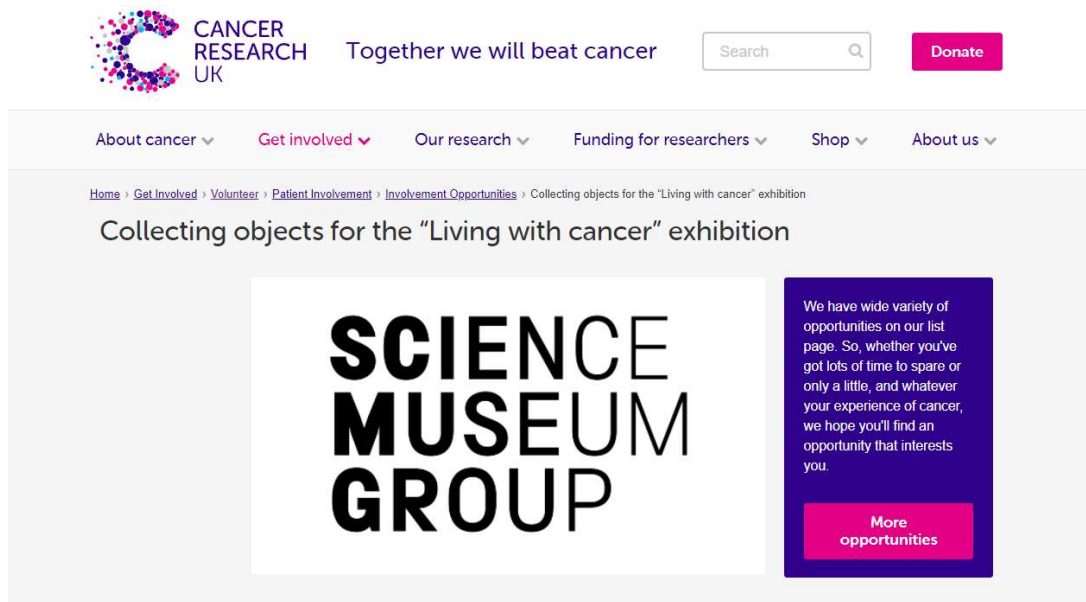
PART 3

Contemporary collecting





PARTICIPATORY COLLECTING WITH INDIVIDUALS WITH LIVED EXPERIENCE



"As someone living with cancer, I wanted to donate something personal to my journey. I donated a piece of art therapy which I'd created when first diagnosed with Lymphoma in 2015. The therapy helped with processing my emotions so it means a lot to me and how I felt in that early period."



The background is a dark blue field filled with a repeating pattern of white and light blue scientific icons. These icons include various laboratory glassware like Erlenmeyer flasks and beakers containing liquid, test tubes in racks, DNA double helix structures, atomic models with orbiting electrons, and stylized biological cells or organisms. The overall theme is science and technology.

Challenges and constraints

How to collect new emerging technologies?

How inclusive is our collecting – who's stories are we missing?

How can we collect globally and ethically?

SEARCH OUR COLLECTION

Search objects, people, categories, object numbers etc.



IN [Category](#) [Therapeutics](#) X

Therapeutics

These objects offer a hugely varied and rich source of material culture with a focus on physical therapies, from 18th century quackery and once orthodox practices like bloodletting to massage and other current treatments.

Topics



- [Surgery](#)
- [Orthopaedics](#)
- [Materia medica and pharmacology](#)

[All](#) 6,638

[People](#) 0

[Objects](#) 6,638

[Documents](#) 0

View:

Filter search



Royal College
of Surgeons
of England
ADVANCING SURGICAL CARE

SurgiCat

rcseng.ac.uk

[Introduction](#) [Search](#)

About SurgiCat



Welcome to SurgiCat

SurgiCat is the online catalogue of the museum and archive collections at the Royal College of Surgeons of England. It includes information and images to help you explore our treasures.

Archive collections

- Find resources that tell the story of the inner workings of the College and its history, from minutes and correspondence to records of research and activities.
- Explore the deposited collections, donated or bequeathed to the College, from personal papers, case notes and correspondence to recipe books, diaries and photographs.

Museum collections

- With over 50,000 object records, SurgiCat is your way in to the rich museum collections of human and comparative anatomy, pathology and zoology specimens



<http://surgicat.rcseng.ac.uk/>

<https://collection.sciencemuseumgroup.org.uk/search>



Thank you for listening!